

# MAZAJ

SEBA

TALES *of the* NILE



Mazaj SEBA offers the mesmerizing experience of serene nights, peaceful days, and silent sailing—a perfect recipe for total relaxation, just as it was nearly a century ago.



WINGS HOSPITALITY

[www.coralsearesorts.com](http://www.coralsearesorts.com)





## REST:

**Royal Suite:** 1 unit 646 sq. ft.(60 SQM)

Up to 4 adults

Smart TV

High Quality bedding & Linens

High Quality Pillows with different options.

Nespresso machine

Kettle

Safety Deposit box

Hair Dryer

Private bathroom with shower cabinet

Branded luxurious toiletries

High quality bathrobe

Mini bar



**Luxury Cabin:** 4 units 270 sq. ft.(25 SQM)

2 adults.

Smart TV

High Quality bedding & Linens

High Quality Pillows with different options.

Nespresso machine

Kettle

Safety Deposit box

Hair Dryer

Private bathroom

Branded luxurious toiletries

High quality bathrobe

Mini bar



## FEATURING

Indoors and outdoors dining areas, fully covered 24/7

All Day Fresh Juices &

Seasonal fresh fruits

24/7 Coffee & Tea station

Premium amenities

High Speed Internet Wi-Fi

TV & Marine Satellite

Laundry service

Sundeck & Sunbeds

Life Jacket

Fire Alarm system

Doctor on call (Upon request)





## AVAILABLE FOR CHARTER BOOKINGS:

	Embarkation Luxor	Disembarkation Aswan	Disembarkation Luxor
Mar 25	01.03.2025	05 & 06.03.2025	08.03.2025
Apr 25	05.04.2025	09 & 10.04.2025	12.04.2025
May 25	03.05.2025	07 & 08.05.2025	10.05.2025
Jun 25	31.05.2025	04 & 05.06.2025	07.06.2025

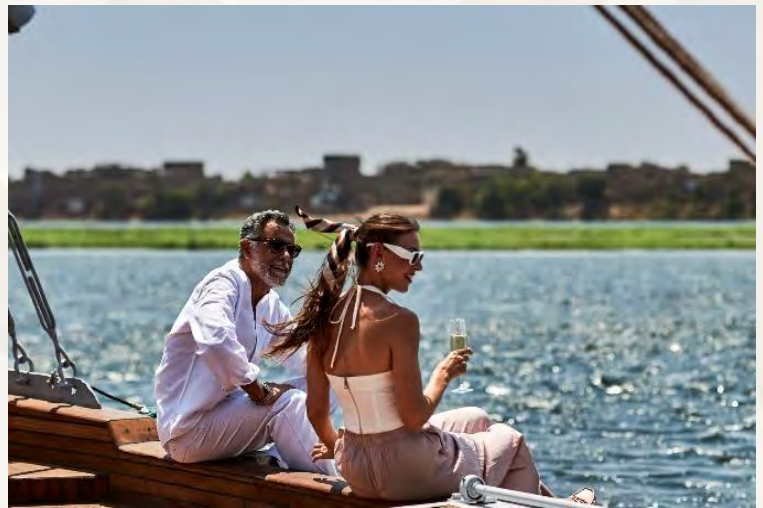
## AVAILABLE FOR CHARTER BOOKINGS:

Dec 24	From	07.12.2024	To	04.01.2025
Jan 25	From	11.01.2025	To	01.02.2025
Feb 25	From	08.02.2025	To	01.03.2025
Mar 25	From	08.03.2025	To	05.04.2025
Apr 25	From	12.04.2025	To	03.05.2025
May 25	From	10.05.2025	To	31.05.2025
Jun 25	From	07.06.2025	To	30.06.2025

## YOUR JOURNEY

Sailing aboard one of our luxury Mazaj Dahabeya yachts, you'll enjoy the serene beauty of the Nile, where timeless elegance meets modern comfort.

Relax on deck as the gentle river breeze carries you past ancient temples, lush landscapes, and charming villages, offering a truly unforgettable journey through Egypt's rich history and natural wonders.



## CONNECT

Coral Sea Regional Sales Office:  
Coral Sea Hotels - Resorts - Nile  
Cruises 21 (a) El Obour Buildings,  
Salah Salem Road, Cairo, Egypt

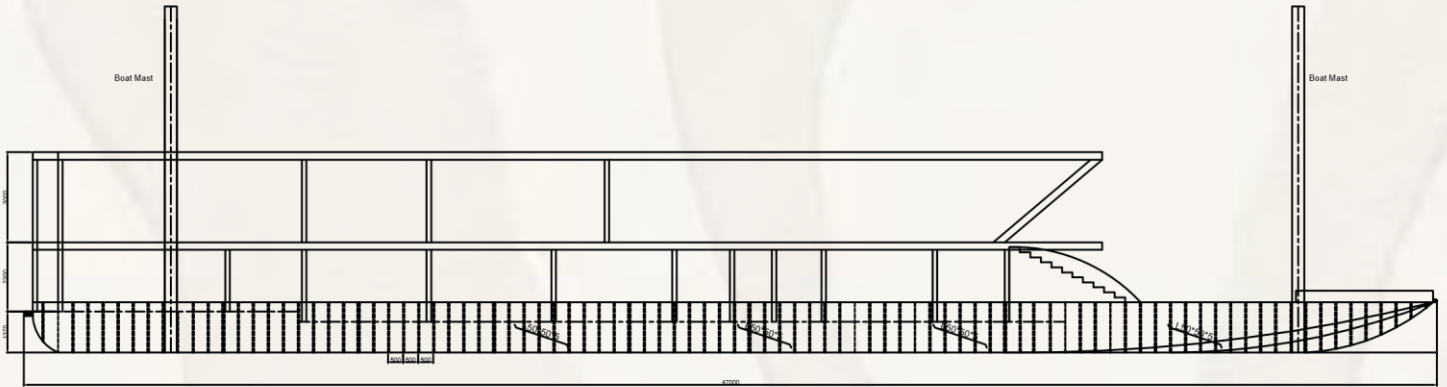
Email: [reservation-  
nilecruises@coralsearesorts.com](mailto:reservation-nilecruises@coralsearesorts.com)

Website: [www.mazajegypt.com](http://www.mazajegypt.com)

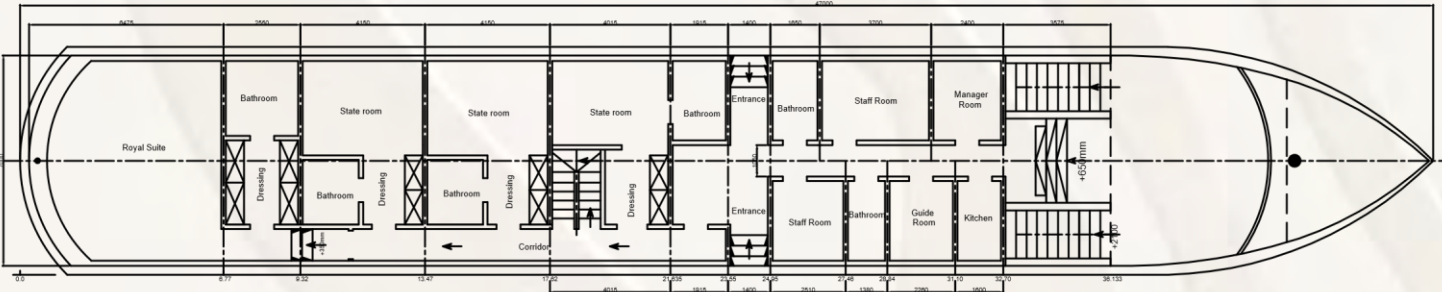
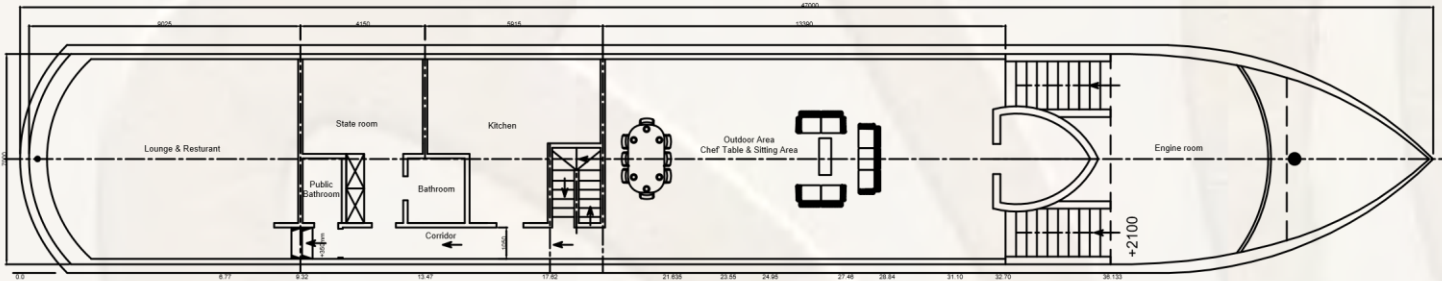
# MAZAJ

SEBA

## TALES *of the* NILE



SECTION AT SIDE



**MAIN DIMENSIONS**

**L.O.A 47.00 mt.**

**B mid. 7.00 mt.**

**D mid. 1.97 mt.**

PROJECT:	MAZAJ	DRAWN:	1	DRAWING NO:	
CHECK:		REV:	0		
DRAWING:	General Arrangement	DATE:		SCALE:	1:50