



AL AHLIA FOR  
NILE NAVIGATION





M/S NILE PREMIUM





## SLEEK AND CONTEMPORARY

---

VIEWS THAT ARE SERENE BY DAY, AND SPARKLING BY NIGHT

**DINING** Serving breakfast, lunch and dinner our dining area offers you a deliciously creative flare of international and regional cuisines. Using fresh and locally sourced ingredients, Find an array of dishes as well as live cooking stations.

**MIX AND MINGLE** Have a seat in our lounge as you take in panoramic Nile-front views. Sip tea, fresh juices or cocktails as you relax and unwind.



## ACCOMODATIONS

---

### NILE BREEZE AND UNPARALLELED VIEWS

Enjoy a panoramic view of the Nile from the comfort of your private cabin or suite. To answer any needs, we offer an array of round-the-clock services - from In-Room dining to dry cleaning.

### STANDARD CABIN

An abundance of light streams in the wall-to-wall windows of these spacious rooms, which boasts Nile views.

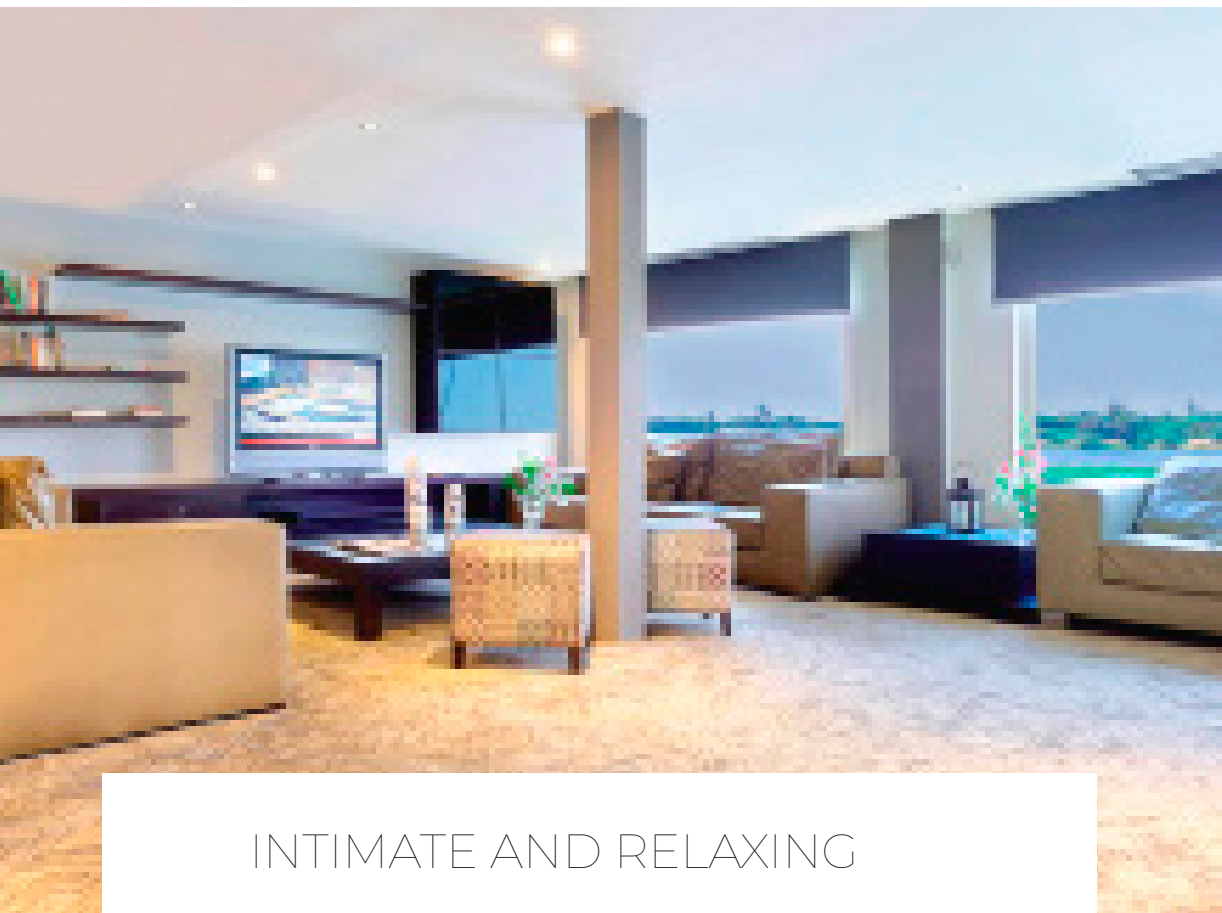
### AMBASSADOR SUITES

A view just for you - Wood floors, elegant decor and a generous balconies overlooking the Nile.

### PRESIDENTIAL SUITES

Our largest suites feature a separate living space, which make this suite ideal for travelling with family.





## INTIMATE AND RELAXING

---

**FITNESS SPACE** Stay healthy and rejuvenate in our fitness facilities. Get your heart pumping and do not miss your workout routine even on cruise time.

**ON THE NILE'S EDGE** Our rooftop terrace is a haven for relaxation where you can swim alongside unobstructed views of the river Nile.

**LEISURE AREA** Unwind from a day of sightseeing in our cozy living area where you can enjoy movies, TV Shows or a variety of board games.



### General Features & Technical data

Length: 72 m.

Width: 14.2 m.

Height: 11.5 m.

Draft: 1.5 m.

Number of Decks : 05 Decks.

56 Luxury Cabins, fully furnished. (21.5 square meters)

2 Ambassador Suites with private balcony in 3rd deck. (30 square meters)

2 Presidential Suites in 4th deck. (34 square meters)

Restaurant, Cocktail lounge and bars.

### Guest Cabins Facilities

King Size, Twin Bedded.

Large Panoramic window.

In-room personal safe deposit box.

Individual controlled AC & telephone with voice mail message.

Plasma LCD TV with Marine Satellite channels and music TV.

Luxurious bathroom with hair dryer, bath tub in all cabins.

Deluxe room amenities & complimentary toiletries.

Mini bar (with possibility to be fill up upon guest request).

24 Hours Room Service.

Same Day laundry service with express pressing service.

Sprinklers, anti fire treatment & full fire safety measures.

02 life jackets in each cabin.

### Elegant Dining Facilities

Large restaurant with a capacity of 120 persons. Our elegant cuisines provide a creative flare of international and regional delicious meals in a modern atmosphere that takes you on a tour through the different world cultures and tackle your sophisticated taste.

### Entertainment and Fitness Facilities

Full Range of animation activities including:

Games, Folkloric dress parties, belly dance shows and dancing music.

Gym equipments.

Internet Access with USB stick Modem (Provided with charge).

Swimming Pool in the Sun Deck.

### Meetings Facilities

Meetings facilities on board of M/S Premium will mix your cruise experience Business with pleasure a unique one.

Meeting Space For 120 persons in lounge.

Latest audio, visual system of providing data with Internet connections.

Relaxing quiet Reading area in 4th deck.

