



Glide along the Nile, taking in the awe-inspiring views of ancient Egypt, while enjoying fine dining and unparalleled relaxation.—TAMR blends exploration with luxury elevating every moment of your voyage.

## REST:

### **Family Suite:** 1 unit 560 sq. ft.(52 SQM)

Up to 4 adults.

Or 2 adults + 2 children.

TV & marine satellites  
High Quality bedding  
& Linens

High Quality Pillows

Kettle

Safety Deposit box

Hair Dryer

2 Private bathroom (bathtubs)

2 Terrace (Public & Private)

Living room (can be converted  
into a bedroom)

Branded premium toiletries

High quality bathrobe

Mini bar



### **Deluxe Suite:** 14 unit 430 sq. ft.(40 SQM)

2 adults.

TV & marine satellites  
High Quality bedding &  
Linens

High Quality Pillows

French balcony

Kettle

Safety Deposit box

Hair Dryer

Private bathroom (shower  
cabinet)

Branded premium  
toiletries

High quality bathrobe

Mini bar



### **Deluxe Cabin:** 23 unit 237 sq. ft.(22 SQM)

Up to 3 adults / 2 adults + 1child.

TV & marine satellites

High Quality bedding & Linens

High Quality Pillows

Kettle

Safety Deposit box

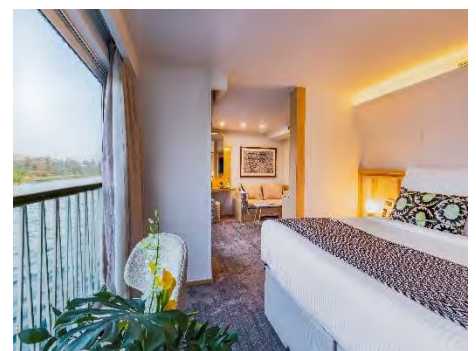
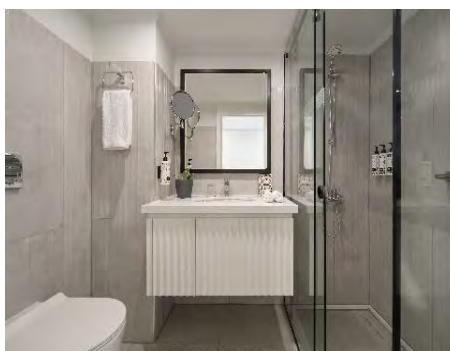
Hair Dryer

Private bathroom (bathtub)

Branded premium toiletries

High quality bathrobe

Mini bar







## FEATURING

Indoors and outdoors dining areas

A live cooking à la carte restaurant

Coffee corner serving hot drinks with snacks 24/7

Electric elevator

Life Jacket

Fire Alarm

Premium amenities

Gym (treadmill, Exercise Bicycle, Dumbbells, Yoga Mats)

SPA

Free Wi-Fi

TV & Marine Satellite

Laundry service

Doctor on call (Upon request)

## YOUR JOURNEY

Inviting you to discover the wonders of Egypt, TAMR offers you a luxury Nile cruise with a world-class service, stunning interiors and breathtaking views of ancient Egypt.

Enjoy gourmet dining, unparalleled relaxation, and the seamless fusion of luxury and exploration, making your journey exceptional.



## CONNECT

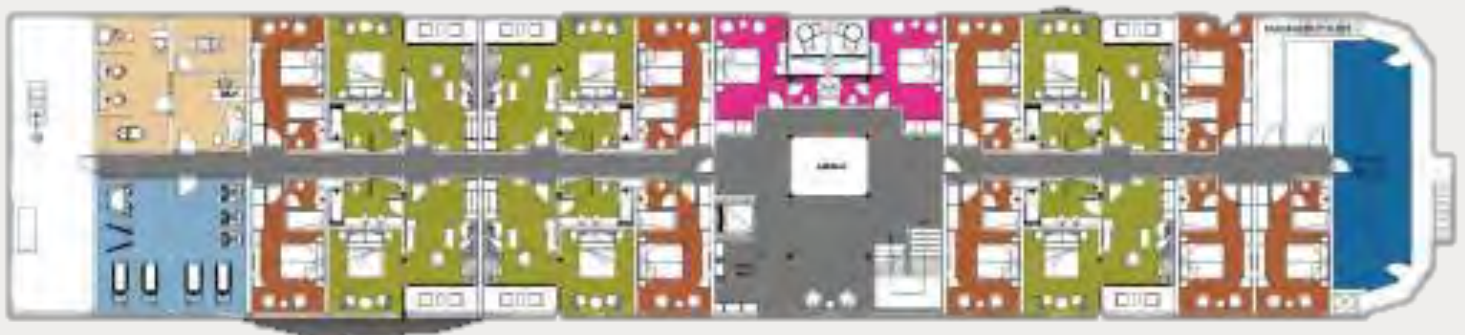
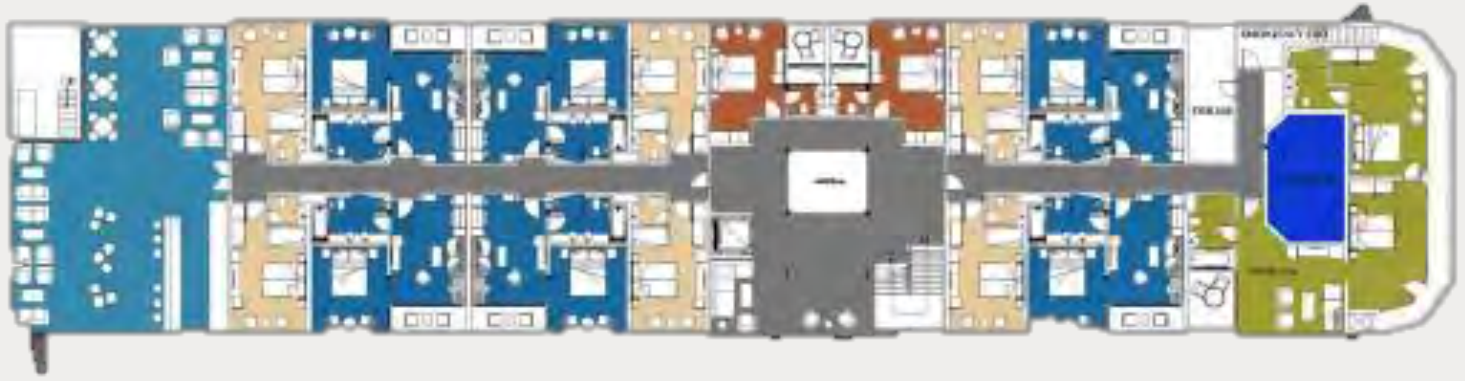
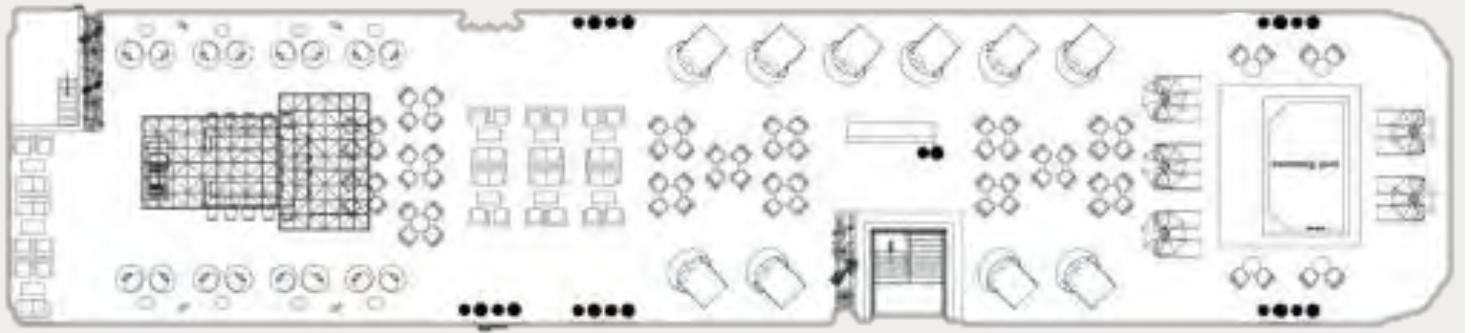
Coral Sea Regional Sales Office:  
Coral Sea Hotels - Resorts - Nile  
Cruises 21 (a) El Obour Buildings,  
Salah Salem Road, Cairo, Egypt

Email: [Reservation-NileCruises@coralsearesorts.com](mailto:Reservation-NileCruises@coralsearesorts.com)

Our Website:

[www.coralsearesorts.com](http://www.coralsearesorts.com)





# 4 nights / 5 days

## Luxor – Aswan every Monday

### Day 1 – Monday

- 12:00 AM** - Embarkation before lunch.
  - 01:00 PM** - Lunch on board.
  - 02:30 PM** - Visit East Bank (Karnak and Luxor Temples).
  - 07:30 PM** - Dinner board.
  - 09:00 PM** - Belly Dancer & Whirling Dervish.
- Overnight in Luxor.



### Day 2 – Tuesday

- 06:00 AM** - Breakfast on board.
- 07:00 AM** - Visit West Bank – Valley of the Kings -Temple of Queen Hatshepsut at El-Deir El-Bahari and the Colossi Memnon
- 01:30 PM** – Lunch on board while sailing to Esna.

- 04:30 PM** - Afternoon tea.
  - 07:00 PM** - Captain's Welcome Cocktail.
  - 07:30 PM** - Dinner on board.
  - 09:00 PM** - Disco & Music.
- Overnight in Esna.

### Day 3 – Wednesday

- 04:00 AM** - Sailing to Edfu
  - 08:00 AM** - Breakfast on board.
  - 09:00 AM** - Visit Horus Temple in Edfu.
  - 11:30 AM** - Sail to Kom Ombo.
  - 01:00 PM** - Lunch on board.
  - 04:30 PM** - Afternoon tea.
  - 05:00 PM** - Visit the Temple shared by two gods Sobek and Haeroris in Kom Ombo.
  - 04:30 PM** - Afternoon tea.
  - 05:00 PM** - Visit the Temple shared by two gods Sobek and Haeroris in Kom Ombo.
  - 07:30 PM** - Dinner on board.
  - 09:00 PM** - Egyptian Galabeya Party.
- Overnight in Aswan.



### Day 4 – Thursday

- 07:00 AM** - Breakfast on board.
  - 08:00 AM** - Visit the High Dam, Philae temple.
  - 01:00 PM** - Lunch on board.
  - 02:30 PM** - Sail on the Nile by Felucca around Kitchener's island, and visit botanical island.
  - 07:30 PM** - Dinner on board.
  - 09:00 PM** - Nubian Show.
- Overnight in Aswan.

### Day 5 – Friday

- 07:00 AM** - Breakfast on board.
- 08:00 AM** - Disembarkation



# 3 nights / 4 days

## Aswan – Luxor every Friday

### Day 1 – Friday

**12:00 AM** - Embarkation before lunch.  
**01:00 PM** - Lunch on board.  
**02:30 PM** - Visit the High Dam and Philae temple.  
**07:30 PM** - **Dinner on board.**  
**09:00 PM** - Nubian Show  
Overnight in Aswan.

### Day 2 – Saturday

**06:00 AM** - Breakfast on board - Free at leisure.  
**01:00 PM** - Lunch on board.  
**03:30 PM** - Sail to Kom Ombo.  
**04:00 PM** - Afternoon tea.  
**06:00 PM** - Visit the Temple shared by two gods Sobek and Haeroris in Kom Ombo  
**07:30 PM** - Dinner on board.  
**07:30 PM** - Sail to Edfu.  
**09:00 PM** - Egyptian Galabeya Party.  
Overnight in Edfu.

### Day 3 – Sunday

**06:00 AM** - Sail to Luxor Through Esna.  
**07:00 AM** - Breakfast on board.  
**12:30 PM** - Lunch on board.  
**02:00 PM** - Visit East Bank (Karnak and Luxor Temples).  
**07:00 PM** - Dinner on board.  
**08:30 PM** - Belly Dancer show  
Overnight in Luxor

### Day 4 – Monday

**06:00 AM** - Breakfast on board.  
**08:00 AM** - Disembarkation.  
**08:00 AM** - Visit West Bank – Valley of the Kings - Temple of Queen Hatshepsut at El-Deir El-Bahari and the Colossi Memnon  
**12:30 PM** - Back to the cruise for Luggage.

